

BEST PRACTICE VACCINE ADMINISTRATION

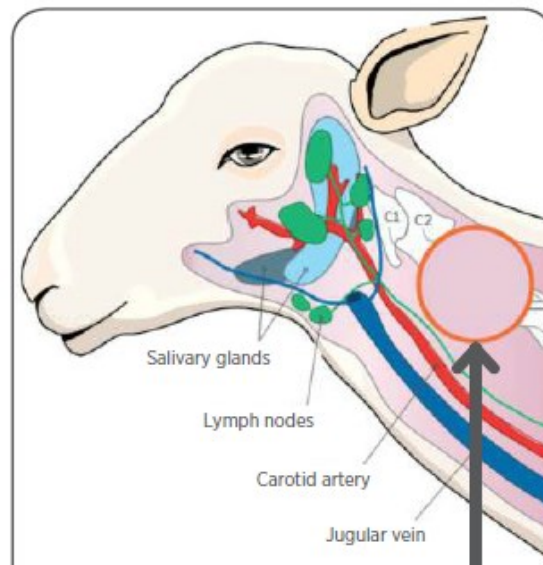


Quick reference guide for the administration and storage of vaccines

BEFORE VACCINATION

Read instructions before use to familiarise yourself with:

- Dose
- Route of administration (subcutaneous (SC) or intramuscular (IM))
- Expiry dates (record dates and batches)
Do not use vaccine if it is past its expiry date
Check the in use shelf life from first opening
- Unless otherwise stated, store vaccine between 2-8°C at all times
When not refrigerated, transport in chilly bins with ice packs
Frozen vaccines should never be used
- Protect from light. Keep vaccines in the original carton when not in use
Avoid vaccination when animals are wet



The orange circle indicates the correct site to vaccinate, under the skin (SC), on the side of the neck, avoiding critical structures near the base of the ear, and the joints of the spine (C1 & C2).

DURING VACCINATION

- Administer vaccines in the middle to top half of the neck
- Select the appropriate needle size and replace regularly
Change the needle each time you change the vaccine pack
Use a new draw-off with each new pack of vaccine
Change needles that become contaminated, burred, bent or broken
- Agitate the pack gently and regularly (don't shake)
- Remove air from needles and guns prior to injection
- Tent the skin prior to giving the SC injection, or use a needle shroud to do this
- Pierce the skin at an angle of 45 degrees for the SC injection, 90 degrees for the IM injection
- When multiple vaccines are used:
 - Choose sites with different draining lymph nodes
 - Space injections so the vaccines do not mix in the animal (eg 10cm between injections)
 - Keep injection sites consistent for each vaccine and document which vaccine was injected where in case of subsequent injection site lesions
- Maintain vaccines between 2-8°C

	Sheep	Cattle & Deer	Pigs
Subcutaneous	¼" (lambs) – ⅜" (adults) 18-20G	⅜ – ½" 16-18G	½" (piglets) – 1" (adults) 14-18G
Intramuscular	½" (lambs/light animals) – 1" (large ewes/rams) 18-20G	1 – 1 ½" 16-18G	⅝" (piglets) – 1½" (adults) 14-18G

AFTER VACCINATION - REUSE

- Do not inject unused vaccine back into the vaccine pack
- Clearly record the date the pack was broached on the packaging. Do not reuse beyond the length of the broached vial claim
- After use separate the delivery tube from the vaccine pack and disinfect the stopper surface
- Store the opened pack within its original box, upright in the refrigerator between 2-8°C
- Some draw off tubes can be boiled to sterilise them prior to re-use. The tube should not be attached more than twice
- Follow vaccine gun manufacturer instructions on gun cleaning and maintenance